

**Tel:018-845-4111**



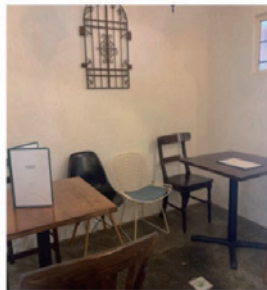
A photograph of a modern interior space. In the center is a black leather tufted sofa. In front of it is a large, oval-shaped glass coffee table with a black metal base. To the left of the sofa is a colorful abstract painting with the word 'LOVE' in a stylized font. A large, textured orange pendant light hangs from the ceiling. To the right, a wooden chair is visible near a window with blue patterned curtains. In the foreground, the back of a white tufted sofa is visible.



## Recommended Cafes



★ ★ nico ★ ★



4-6-26 Sanno Akita City, Akita 010-0951

Tuesday~Saturday 8:30 a.m. ~5:00 p.m.

Monday 11:00 a.m. ~5:00 p.m.

Regular holiday is Sunday.



# Pancakes



VERY DELICIOUS.

The recommended menu is pancakes with macadamia nut sauce.

Many foreigners like Eggs Benedict.



THE PRICE IS REASONABLE.

# Soups

The recommended menu item is the sandwich set.



very tasty!!

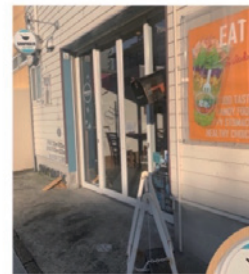
A favorite menu item for foreigners is the salmon open sandwich.



Vegetarian options are available, including vegetable-only soups and salads.

Requests can also be accommodated.

★ ★ Soup holic ★ ★



9-10-C Nakadori Akita City, Akita 010-0001

Monday~Friday 7:30 a.m. ~ 3:00 p.m.

Sunday 9:00 a.m. ~ 3:00 p.m.

Regular holiday is Wednesday.

