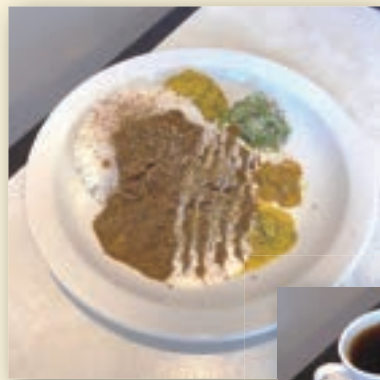


[KISSA WAI]



Spice Curry (Chicken)



**Coffee (Tanzania)
Chocolate Terrine
Cheesecake**

- 2-4-30 Kyokunan Akita City, Akita Prefecture
010-0925
- Approx. 25 min from
Akita Station or Ugoushijima Station
- Friday, Saturday 11:00 a.m. - 8:00 p.m.
Sunday, Monday 11:00 a.m. - 6:00 p.m.
Tuesday, Wednesday, Thursday
- Instagram @kissa_wai
- Spiced curry, coffee and cakes can be enjoyed.
You can enjoy the cafe with a walking course.

[Map]

[KISSA WAI]



[niru cafe]



[S CAFE]



[IN HER LIFE]



**Let's Walk
To The
Cafe**

Contact Info:
Seirei Women's Jr. College
Graduation Study
by Ms. Sugano
Amau Sasaki

10-33 Terauchi Koya Akita
City, Akita 011-0937
Tel. 018-845-4111




#SEIREI_INAHS

[Name of store]

- Location
- Walking distance from station
- Business Days
- Regular Closing Day**
- SNS
- Introduction

(niru cafe)

Three kinds of curry plate



Kase Kuchen
Komatsu's honey latte

- 3-74, Tegata-Karamiden Akita City, Akita Prefecture 010-0861 Japan
- Approx. 25 min from Akita Station
- Weekdays 10:00 a.m. - 4:00 p.m.
Saturday and Sunday 11:00 a.m. - 3:00 p.m.
Thursday, 2nd and 4th Sunday of the month.
*Check out the instagram page!
- Instagram @niru_cafe
- You can enjoy gluten-free curry that goes well with Akita rice.

(s cafe)



Omelette rice with
demi-glace sauce and
spare rib curry



Fried Soybean Meat
(Vegan Friendly)

- 1-16-26 Izumi-Minami Akita City, Akita Prefecture 010-0918 Japan
- Approx. 20 min from Izumisotoasahikawa Station
- Monday - Thursday 11:00 a.m. - 2:00 p.m.
Friday – Sunday
- Instagram @scafe0517
- This restaurant has a delicious vegan menu!

(IN HER LIFE)



Acai bowl



Taco and rice plate

- 2-15-12 Goshono-Jizouden Akita City, Akita Prefecture 010-1413 Japan
- Approx. 20 min from Yotsugoya Station
- Friday - Tuesday 11:30 a.m. - 4:00 p.m.
Wednesday, Thursday
- Instagram @inherlife
- The open-air restaurant will fill your stomach and your heart.