



Yokote Trip Guide



Access

TO MASUDA

JR Akita

Take JR Ou Line to Jumonji Station. Take the bus to Masuda-machi

Tokyo

Take Shinkansen to Omagari Station. Take JR Ou Line to Jumonji Station. Take the bus to Masuda-machi.

TO YOKOTE

JR Akita

Take JR Ou Line to Yokote Station.

Tokyo

Take the Shinkansen to Omagari Station. Take JR Ou Line to Yokote Station.

SASAHEI SHOTEN

Tel 0182-45-3068

[Summer] Open: 10 a.m. Closed: 10 p.m.

[Winter] Open: 10 a.m. Closed: 6 p.m.

YOKOTE MASUDA MANGA MUSEUM

Tel 0182-45-5569

Open 10 a.m. Closed 6 p.m.

[Admission until 5:30 p.m.]

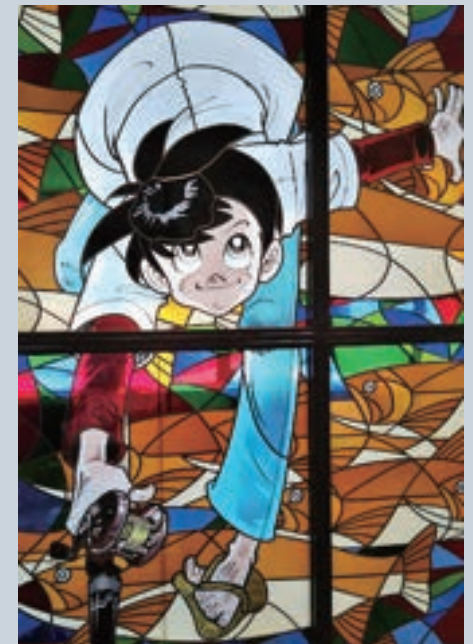
SHOKUDO CAFÉ YAKUZEN

Tel 080-6035-3791

Open 11 a.m. Closed 3 p.m.

Contact Info:
Seirei Women's Jr. College
Graduation Study
by Ms. Sugano
Akari Sato

10-33 Terauchi Koya Akita
City, Akita 011-0937
Tel. 018-845-4111



Sasahei Shoten

Established in 1919.



It used to be run as a general store.



Soft ice cream is refreshing in summer!!
Crispy Croissant Tai-yaki is delicious in winter!!



Yokote Masuda Manga Museum



Giant Manga Wall



Manga artists from Akita Prefecture
Yoshihiro Takahashi [Ginga: Nagareboshi GIN]
Takao Yaguchi [Tsurikichi Sampei]



Shokudo Café Yakuzen



Healthy "A" Lunch is delicious!



1. Detox effect
2. Increased metabolic capacity
3. Anti-aging

